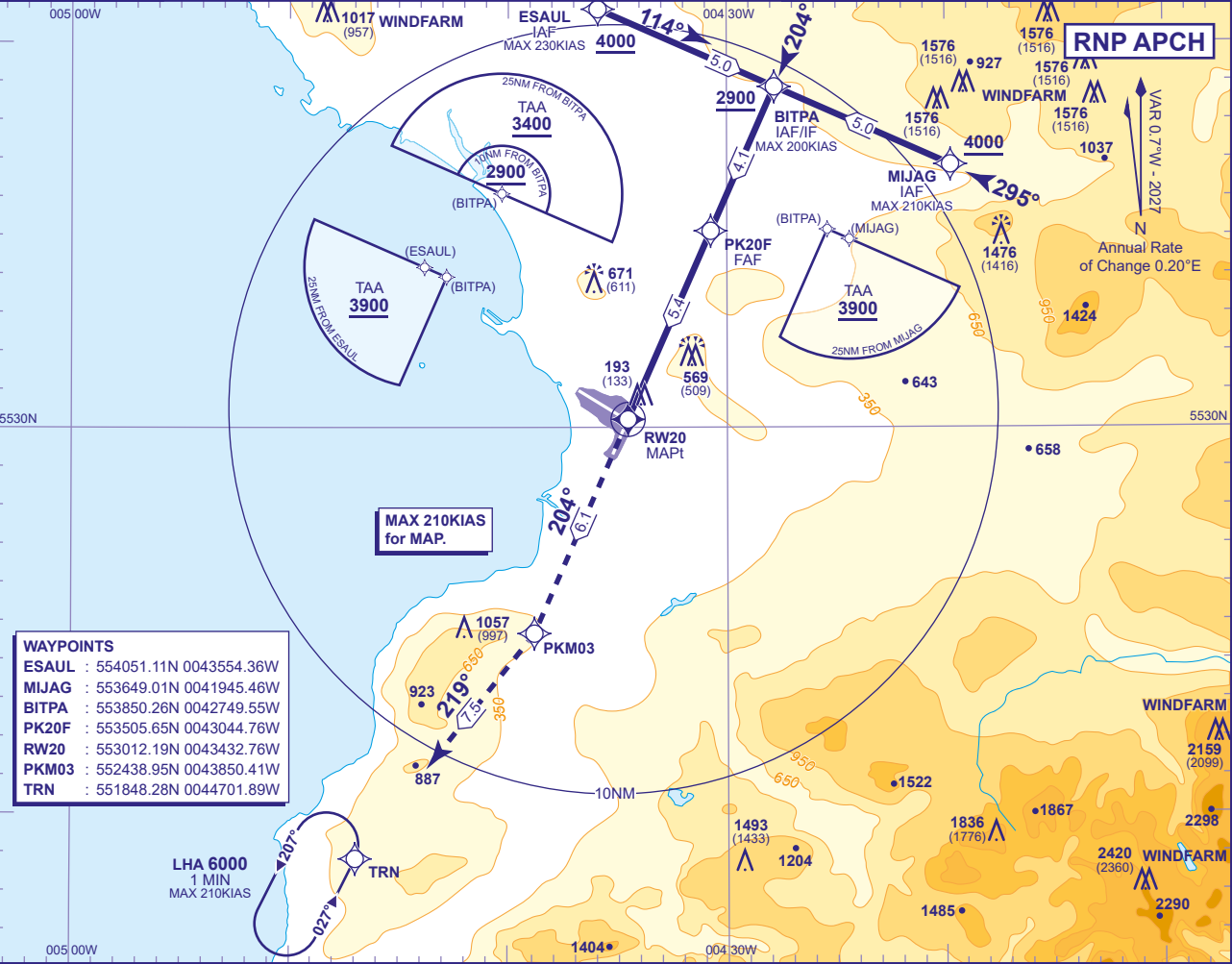


INSTRUMENT APPROACH CHART - ICAO

PRESTWICK
RNP
RWY 20
(ACFT CAT A,B,C,D)

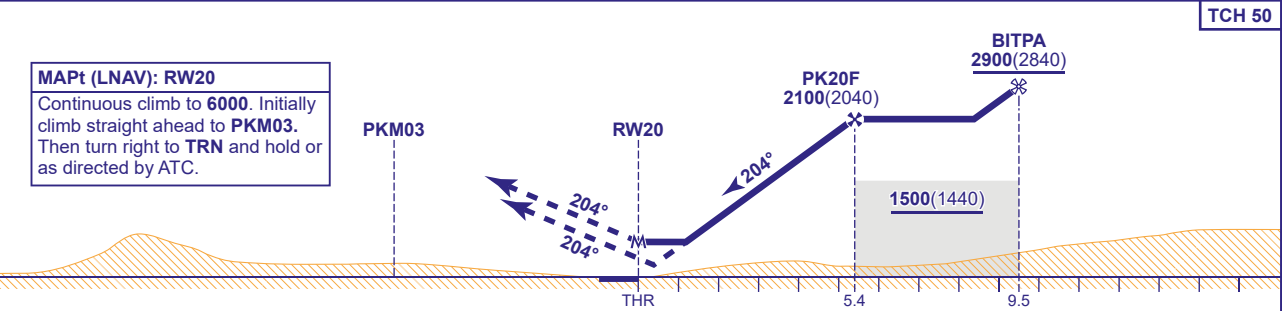
<div>39</div> <div>MSA 25NM ARP</div>	APP 129.450	PRESTWICK APPROACH	AD ELEVATION 65
	TWR 118.150, 127.155	PRESTWICK TOWER	THR ELEVATION 60
	RAD 129.450, 124.630	PRESTWICK RADAR	OBSTACLE ELEVATION 2420 AMSL (2360) (ABOVE THR)
	ATIS 121.130	PRESTWICK INFORMATION	BEARINGS ARE MAGNETIC
			MIN TEMP -15°C
			TRANSITION ALTITUDE 6000



WAYPOINTS	
ESAUL	: 554051.11N 0043554.36W
MIJAG	: 553649.01N 0041945.46W
BITPA	: 553850.26N 0042749.55W
PK20F	: 553505.65N 0043044.76W
RW20	: 553012.19N 0043432.76W
PKM03	: 552438.95N 0043850.41W
TRN	: 551848.28N 0044701.89W

RECOMMENDED PROFILE VNAV Vertical Path Angle 3.5°(LNAV 6.12%), 370FT/NM			
NM to RW20	4	3	2
ALT(HGT)	1600(1540)	1220(1160)	850(790)
			480(420)

MAPt (LNAV): RW20
Continuous climb to **6000**. Initially climb straight ahead to **PKM03**. Then turn right to **TRN** and hold or as directed by ATC.



Aircraft Category		A	B	C	D	Rate of descent	G/S KT				
OCA (OCH)	LNAV/VNAV	610(550)	620(560)	640(580)	650(590)		160	140	120	100	80
	LNAV	710(650)	710(650)	710(650)	710(650)		990	870	740	620	500
VM(C)OCA (OCH AAL)	Total Area	750(685)	870(805)	1070(1005)	1070(1005)						

NOTE 1 VPA exceeds 3.5° above 15°C.
2 Portions of this procedure lie outside controlled airspace.

CHANGE (12/25): MIJAG TAA HEIGHT INCREASE. MAG VAR. MAG HEADINGS.